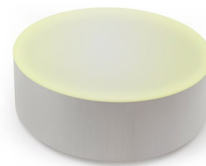


Drum Table

SPARKLE



The experience of light and touch is universally pleasing, eliciting wonder from people of all ages. As playful glowing lights dance magically on the surfaces of our Sparkle products, people are drawn to touch, discover, recharge and connect with new and uplifting sensory experiences.



LIGHT up the Room



Drum Table



Features

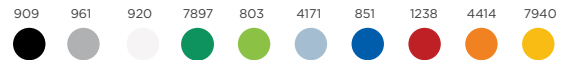
- Full Spectrum LED Light
- Capacitive Touch Sensors
- 20 interactive light programs, plug and play setup
- Universal Power, 110 - 220 VAC, 6ft Power cord
- Cord plugs to floor outlet under product or to wall outlet
- Heavy duty floor levelers
- Translucent white solid surface resin top
- Laminate, base, standard finish is hardrock maple

86992



Options

- USB charging ports and outlets
- Ambient glowing LED light (non-interactive)
- Additional & custom laminate finishes



Models

Model No.	Product Size	Charging
SDT3616	36in dia. x 16in	none
SDT3616D4	36in dia. x 16in	2 USB, 2 outlets

Care & Maintenance

Spray the top and side surfaces with a multi-surface cleaner and wipe using a soft cloth. Recommended cleaners include Fantastik household cleaner, and Formula 409 household cleaner. For disinfecting Sani-Cloth® AF3 Germicidal Disposable Wipes, Steris Coverage Plus® and Clorox Healthcare® Hydrogen Peroxide Cleaner Disinfectant Wipes are also recommended. Do not use strong acidic or solvent based cleaners, such as methyl chloride or acetone.

Superficial scratches on the top surface only can be removed by rubbing a wet #7448 Scotch Brite pad in a circular motion until the scratches disappear, followed by spraying with a multi-surface cleaner and wiping dry with a soft cloth. Never use abrasive cleaners on the laminate sides, which will dull or damage the finish.

Drum Table



SDT3616 | SDT3616D4

